

Model	Gear Ratio	Maximum efficacy					Idling Speed (R.p.m)	Starting torque		Maximum Torque	
		Power (HP)	Torque		Rotate Speed (R.p.m)	Air Consumption (L/min)		N.m	lbf.in	N.m	lbf.in
			N.m	lbf.in							
QMH010	1:1	0.1	0.7	6.2	1100	125 (4.375 CFM)	2200	1.12	9.9	1.4	12.3
	5:1		3.5	30.9	220		440	5.6	49.5	7	61.9
	10:1		7	61.9	110		220	11.2	99.1	14	123.9
	20:1		14	123.9	55		110	22.4	198.2	28	247.8
	30:1		21	185.9	36		72	33.6	297.3	42	371.7
	40:1		28	247.8	28		56	44.8	396.4	56	495.6
	50:1		35	309.7	22		44	56	495.6	70	619.5
	70:1		49	433.6	16		32	78.4	693.8	98	867.3
	90:1		63	557.5	12	24	100.8	892	126	1115	
QMH025A	1:1	0.33	3	26.5	900	250 (8.75 CFM)	1800	4.8	42.4	6	53
	5:1		15	132.7	180		360	24	212.4	30	265.4
	10:1		30	265.5	90		180	48	424.8	60	531
	15:1		45	398.25	60		120	72	637.2	90	796.5
	20:1		60	531	45		90	96	849.6	120	1062
	30:1		90	796.5	30		60	144	1274.4	180	1593
	40:1		120	1062	23		45	192	1699	240	2124
	50:1		150	1327.5	18		36	240	2124	300	2655
	60:1		180	1593	15		30	288	2548.8	360	3186
	70:1		210	1858.5	13		26	336	2973.6	420	3717
	80:1		240	2124	11		22	384	3398	480	4248
	100:1		300	2655	9		18	480	4248	600	5310
	120:1		360	3186	7.5		15	576	5097.6	720	6372
	160:1		480	4248	5.6		11.2	768	6796	960	8496
200:1	600	5310	4.5	9	960	8496	1200	10620			
Model	Gear Ratio	Maximum efficacy					Idling Speed (R.p.m)	Starting torque		Maximum Torque	
		Power (HP)	Torque		Rotate Speed (R.p.m)	Air Consumption (L/min)		N.m	lbf.in	N.m	lbf.in
			N.m	lbf.in							
QMH050A	1:1	0.66	7	61.95	750	450 (15.75 CFM)	1500	11.2	99.1	14	123.9
	5:1		35	309.75	150		300	56	495.6	70	619.5
	10:1		70	619.5	75		150	112	991.2	140	1239
	15:1		105	929.25	50		100	168	1486.8	210	1858.5
	20:1		140	1239	37.5		75	224	1982.4	280	2478
	30:1		210	1858.5	25		50	336	2973.6	420	3717



PISTON AIR MOTORS DATA

Super Explosion-proof

	40:1		280	2478	18.75		37.5	448	3964.8	560	4956
	50:1		350	3097.5	15		30	560	4956	700	6194
	60:1		420	3717	12.5		25	672	5947.2	840	7434
	70:1		490	4336.5	11		21	784	6938.4	980	8673
	80:1		560	4956	9.4		18.75	896	7929.6	1120	9912
	100:1		700	6195	7.5		15	1120	9912	1400	12390
	120:1		840	7434	6.25		12.5	1344	11894	1680	14868
	150:1		1050	9292.5	5		10	1680	14868	2100	18585
	200:1		1400	12390	3.8		7.5	2240	19824	2800	24780
QMH075	1:1	0.75	10	88.5	550	525 (18.37 CFM)	1100	16	141.6	20	177
	5:1		50	442.5	110		220	80	708	100	885
	10:1		100	885	55		110	160	1416	200	1770
	15:1		150	1327.5	36.6		73	240	2124	300	2655
	20:1		200	1770	27.5		55	320	2832	400	3540
	30:1		300	2655	18		37	480	4248	600	5310
	40:1		400	3540	13.75		27.5	640	5664	800	7080
	50:1		500	4425	11		22	800	7080	1000	8850
	60:1		600	5310	9		18	960	8496	1200	10620
	70:1		700	6195	8		16	1120	9912	1400	12390
	80:1		800	7080	6.87		13.75	1280	11328	1600	14160
	100:1		1000	8850	5.5		11	1600	14160	2000	17700
	120:1		1200	10620	4.58		9.2	1920	16992	2400	21240
	150:1		1500	13275	3.7		7.5	2400	21240	3000	26550
200:1	2000	17700	2.75	5.5	3200	28320	4000	35400			
QMH100	1:1	1	18.71	165.5	380	560 (19.6 CFM)	760	29.94	264.96	37.42	331
	5:1		94	831.9	76		152	150	1327.5	188	1663.8
	10:1		187	1654.9	38		76	299	2646.1	374	3309.8
	30:1		560	4956	12.7		25.5	896	7929.6	1120	9912
	40:1		748	6619	9.5		19	1196	10584	1496	13239
	50:1		935	8274.7	7.6		15	1496	13239	1870	16549
	60:1		1122	9929	6		12	1795	15887	2244	19859
	70:1		1309	11584	5.4		10.8	2094	18531	2618	23168
	80:1		1496	13246	4.7		9.5	2393	21183	2992	26479
	100:1		1871	16558	3.8		7.6	2992	26479	3740	33116
QMH400	1:1	5.5	19.1	169	2000	5400 (189 CFM)	3000	30.56	270.5	61.1	540.7
	5:1		95.5	845.2	400		800	152.8	1352	191	1690
	10:1		191	1690	200		400	305.6	2704	382	3380
	15:1		286.5	2535	133		266	458	4053	573	5071
	20:1		382	3380	100		200	611	5409	764	6761
	30:1		573	5071	66		132	916	8106	1146	10142
	40:1		764	6761	50		100	1222	10814	1528	13522

RuiAn OUXU Machinery Contacts: jimmy

E-mail: jimmy@raouxu.com

Tel: +86-0577-65130099 Fax: +86-0577-66863726

Mobil: +86-13705870099 (whatsapp)

Website: <http://www.airmotors.shop>

Address: Ruian Economic Development Zone

	50:1		955	8451	40		80	1528	13522	1910	16903
	60:1		1146	10142	33		66	1832	16213	2292	20284
	80:1		1528	13522	25		50	2444	21629	3056	27045
	100:1		1910	16903	20		40	3056	27045	3820	33807

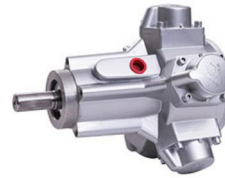
Four kind of mounting:



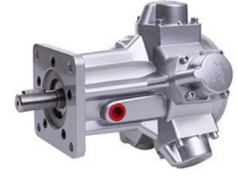
Basic



Vertical



Basic



Vertical



IEC Flange



Horizontal



IEC Flange



Horizontal

Piston Air Motor With Reducer

CASE VIDEO IN



Vertical Gear Reducer



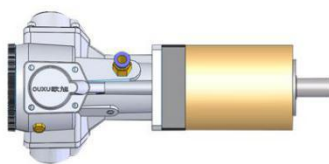
Horizontal Gear Reducer



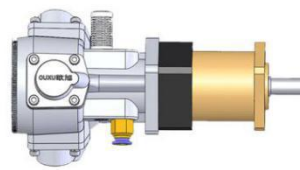
Worm Reduction Gear



Vertical Cycloid Reducer



Planetary Reducer



Vertical Planetary Reducer